



# OVERBROOK SPIRITS FOR SALE

203 E 8th Street, Overbrook, Kansas



## SALE PRICE: \$425,000 | 0.18 ACRE LOT

### DEMOGRAPHICS

	1 mile	3 miles	5 miles
Estimated Population	1,054	1,464	1,994
Avg. Household Income	\$75,080	\$85,374	\$90,659

- Profitable turn key business & real estate
- Stabilized income
- In business since 2013



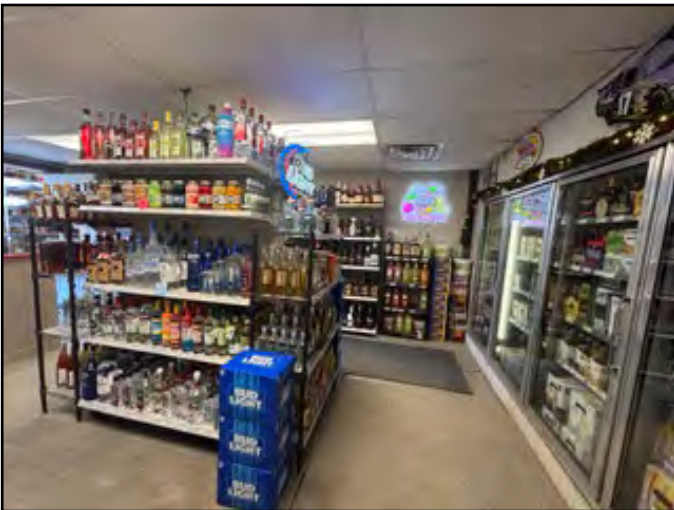
CLICK HERE TO VIEW MORE  
LISTING INFORMATION

For More Information Contact:

**BILL MAAS, CCIM | 816.412.7392 | bmaas@blockandco.com**

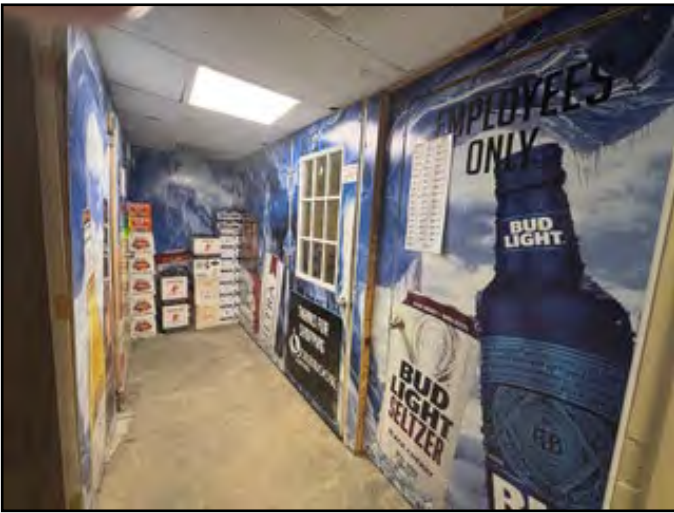
*Exclusive Agents*

## PHOTOS





## PHOTOS







# OVERBROOK SPIRITS FOR SALE

203 E 8th Street, Overbrook, Kansas

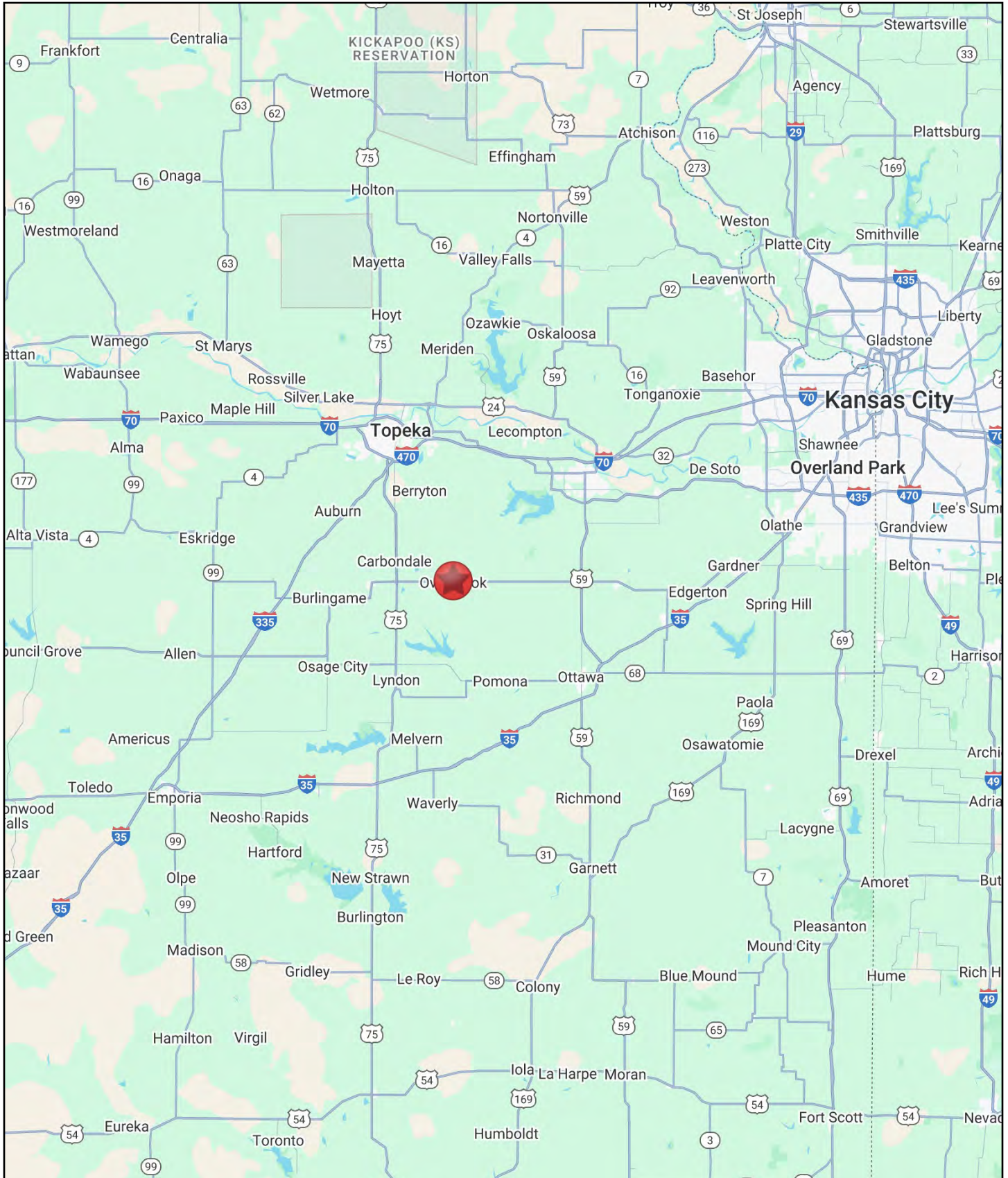
AERIAL





# OVERBROOK SPIRITS FOR SALE

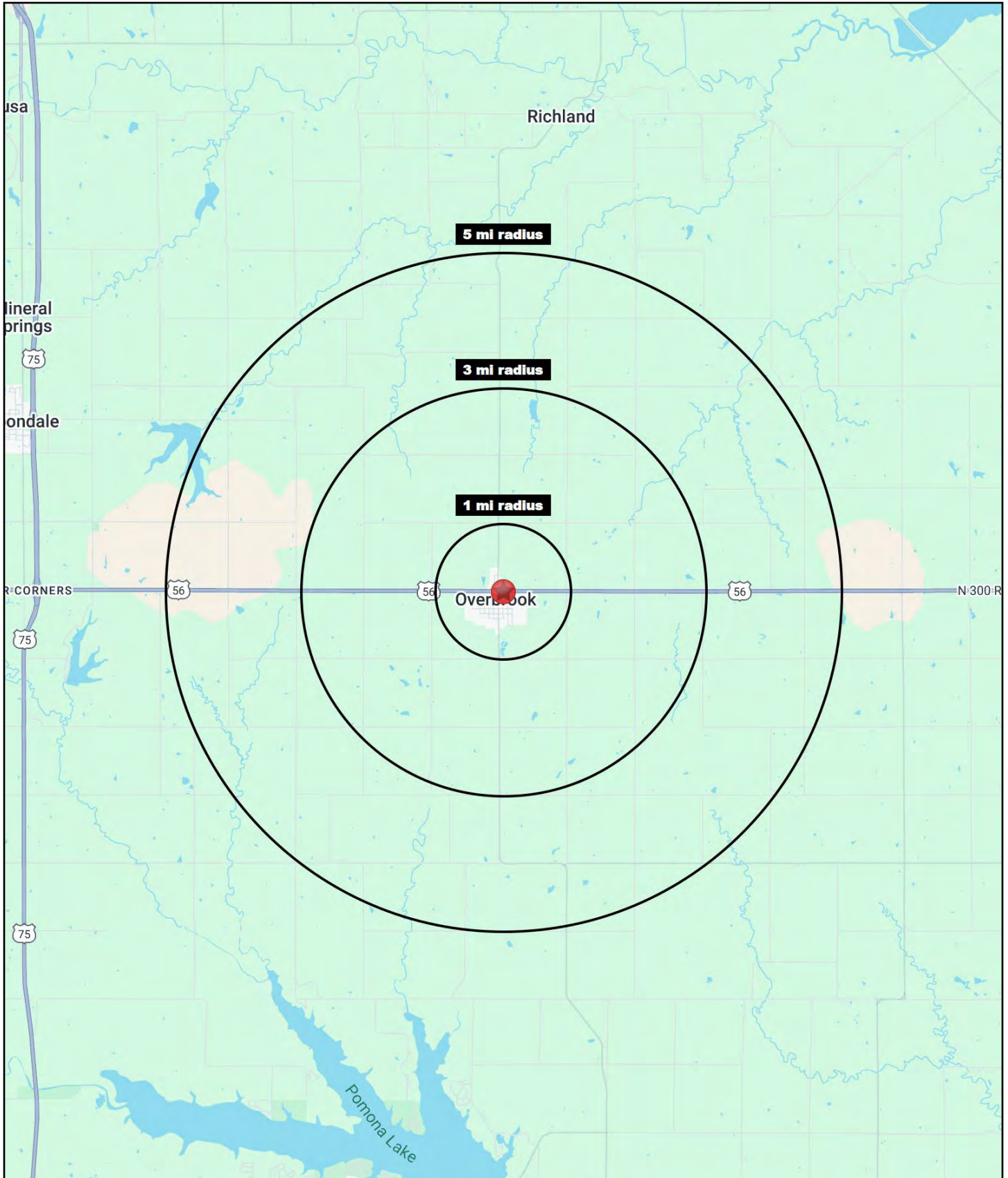
203 E 8th Street, Overbrook, Kansas





# OVERBROOK SPIRITS FOR SALE

203 E 8th Street, Overbrook, Kansas





# OVERBROOK SPIRITS FOR SALE

## 203 E 8th Street, Overbrook, Kansas

203 E. 8th Street Overbrook, KS 66524	1 mi radius	3 mi radius	5 mi radius
<b>Population</b>			
2024 Estimated Population	1,054	1,464	1,994
2029 Projected Population	1,098	1,528	2,085
2020 Census Population	1,081	1,492	2,030
2010 Census Population	1,110	1,526	2,074
Projected Annual Growth 2024 to 2029	0.8%	0.9%	0.9%
Historical Annual Growth 2010 to 2024	-0.4%	-0.3%	-0.3%
2024 Median Age	45.1	44.4	44.4
<b>Households</b>			
2024 Estimated Households	426	589	803
2029 Projected Households	429	596	816
2020 Census Households	435	593	805
2010 Census Households	430	589	806
Projected Annual Growth 2024 to 2029	0.1%	0.2%	0.3%
Historical Annual Growth 2010 to 2024	-	-	-
<b>Race and Ethnicity</b>			
2024 Estimated White	95.2%	94.7%	94.6%
2024 Estimated Black or African American	1.0%	1.3%	1.1%
2024 Estimated Asian or Pacific Islander	0.6%	0.6%	0.6%
2024 Estimated American Indian or Native Alaskan	0.4%	0.3%	0.3%
2024 Estimated Other Races	2.8%	3.1%	3.4%
2024 Estimated Hispanic	3.2%	3.1%	3.1%
<b>Income</b>			
2024 Estimated Average Household Income	\$75,080	\$85,374	\$90,659
2024 Estimated Median Household Income	\$60,983	\$72,716	\$76,480
2024 Estimated Per Capita Income	\$31,204	\$34,952	\$36,950
<b>Education (Age 25+)</b>			
2024 Estimated Elementary (Grade Level 0 to 8)	1.6%	1.2%	1.2%
2024 Estimated Some High School (Grade Level 9 to 11)	7.6%	5.7%	5.1%
2024 Estimated High School Graduate	35.9%	36.7%	36.8%
2024 Estimated Some College	20.6%	20.8%	21.4%
2024 Estimated Associates Degree Only	8.0%	6.8%	7.0%
2024 Estimated Bachelors Degree Only	14.7%	19.2%	19.0%
2024 Estimated Graduate Degree	11.4%	9.7%	9.5%
<b>Business</b>			
2024 Estimated Total Businesses	28	32	37
2024 Estimated Total Employees	163	174	188
2024 Estimated Employee Population per Business	5.8	5.4	5.1
2024 Estimated Residential Population per Business	37.3	45.3	53.9

©2025, Sites USA, Chandler, Arizona, 480-491-1112 Demographic Source: Applied Geographic Solutions 11/2024, TIGER Geography - RS1